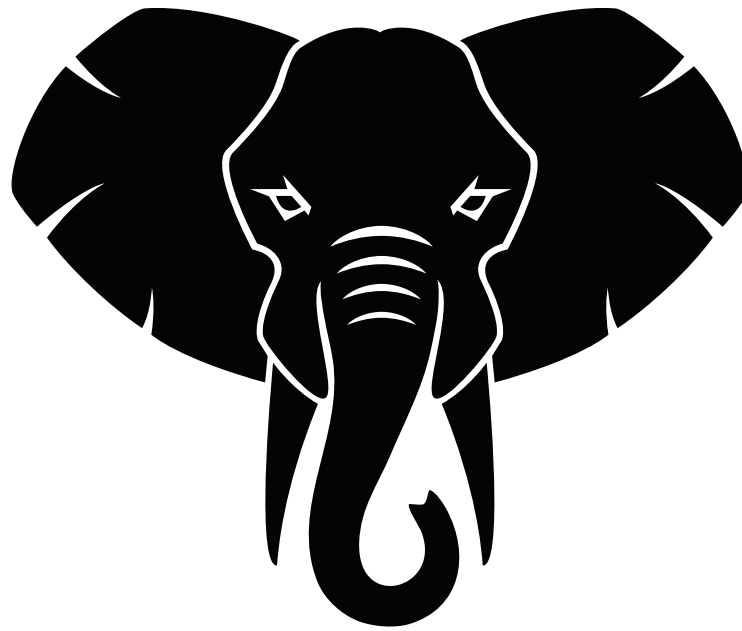


Richard Flint's

**A DAY
AT THE ZOO**

Part Two



*Learning To Take The Difficult Out of The
Different Personalities In Your Life*

Study Guide

Written by Richard Flint, CSP

Richard Flint Seminars • 1-800-368-8255 • www.RichardFlint.com



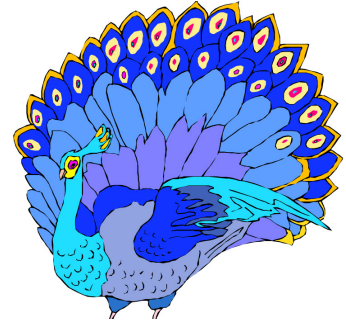
TAKING A TOUR OF THE ZOO PART TWO



Personality #7 — PEACOCK

Character Traits:

1. Likes to strut its stuff.
2. It's extremely colorful and that makes people want to be around it.
3. The sound it makes is a nonsense sound.
4. When it loses its plumes, it loses its brilliance and attraction.



Zoo Keeper Notes:

Leadership Presence: Needs a: **MANAGER** **DISCIPLINARIAN** **COACH**

Personality Understanding:

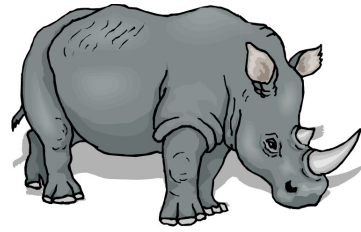
- is only dangerous to itself
- requires a lot of personal attention
- when it isn't being silly, pay close attention to it

Leadership Technique:

Zoolationships: Parrot — Turtle — Ant

NOTES

Personality #8 — RHINOCEROS



Character Traits:

1. Not a very social animal, but is very aggressive.
2. Runs fast, sees poorly, and is easily disturbed.
3. Very unpredictable and will charge at any odd smell or sound.
4. Puts out fires it comes across.

Zoo Keeper Notes:

Leadership Presence: Needs a: **MANAGER DISCIPLINARIAN COACH**

Personality Understanding:

- driven by its need to achieve; this is your perfectionist mentality
- personality is often very scattered
- can stress itself, and others, out

Leadership Technique:

Zoolationships: Two Hump Camel — Gorilla — Lion

NOTES

Personality #11 — PORPOISE



Character Traits:

1. It's very sensitive.
2. It's an intelligent animal and can be trained.
3. Once your friend, it will be your friend for life.

Zoo Keeper Notes:

Leadership Presence: Needs a: **MANAGER DISCIPLINARIAN COACH**

Personality Understanding:

- It's an asset to the personality zoo.
- It's top quality at everything it does.
- Supports the partnership and adds to it because of its traits.

Leadership Technique:

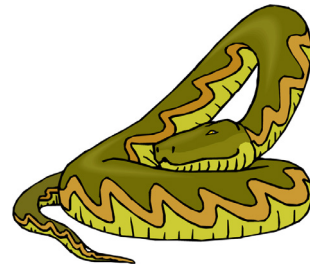
Zoolationships: Two Hump Camel — Giraffe — Deer

NOTES

Personality #12 — BOA

Character Traits:

1. Loves to wrap itself around you and squeeze, but be careful of the hug; it can be fatal!



Zoo Keeper Notes:

Leadership Presence: Needs a: **MANAGER** **DISCIPLINARIAN** **COACH**

Personality Understanding:

- Third most dangerous animal in the zoo.
- It's always creating emotional discard by its behavior of using what it knows against you.

Leadership Technique:

Zoolationships: Monkey — Vulture — Bat

NOTES



Richard Flint Seminars
1-800-368-8255

www.RichardFlint.com